

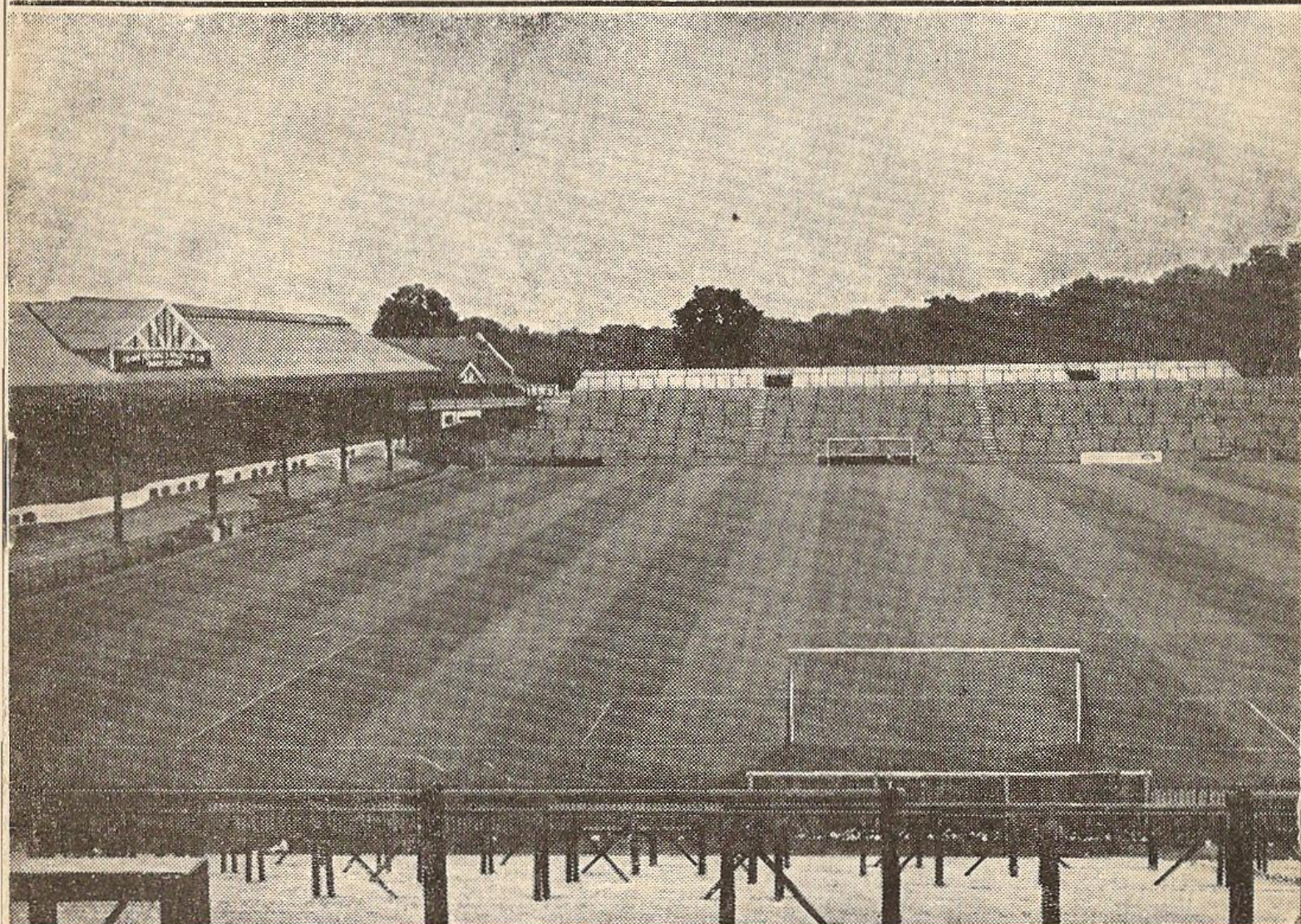


FULHAM

Football Club

LEAGUE DIVISION I
SEASON 1963-1964

OFFICIAL PROGRAMME



PRICE

6^d

FERENCVAROSI TORNA CLUB

(HUNGARY)

MONDAY, DECEMBER 9, 1963

FRIENDLY MATCH

KICK OFF 7.15 P.M.



**YOU'RE
MISSING
SOMETHING**

WITHOUT

RADIO TIMES

**FULL BBC SOUND AND TELEVISION
PROGRAMMES FOR THE WEEK**

FULHAM FOOTBALL AND ATHLETIC Co. Ltd.

Registered Office: Craven Cottage, Stevenage Road, Fulham, S.W.6

Directors—T. TRINDER (Chairman), N. A. D'AMATO (Vice-Chairman),
R. A. DEAN, J. G. WALSH, C. B. DEAN.
Secretary and General Manager—F. R. OSBORNE.

Medical Officer—Dr. W. R. D. WIGGINS, M.R.C.S., D.A., R.C.P. and S. (England).
Team Manager—B. JEZZARD. Trainer—F. PENN.
Telephone—RENOWN 5621. Telegrams—"FULHAMISH, LONDON, S.W.6."

Monday, 9th December, 1963

Kick off 7.15 p.m.

INSIDE THE COTTAGE

THIS evening we proudly welcome to the Cottage one of the greatest sides in Europe. Though the name of Ferencvarosi Torna does not slip easily from the Englishman's tongue, it is a household word in Hungary.

Our guests are the "Spurs" of Hungary and have a larger following than any other team in their land. And not surprisingly, for Ferencvarosi have built up a great reputation.

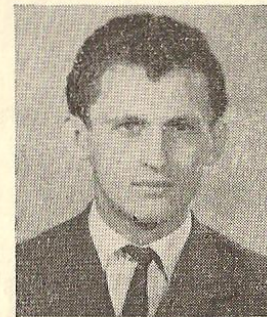
Last season this powerful team swept to success, winning the Hungarian championship. And they are well in the running to repeat this triumph.

At the half way mark this season, they are third in the table with the same number of points as the leaders.

Great players have, for years, been associated with the club. Men like Florian Albert, a world-class forward, and Dr. Máté Fenuvesi, capped more than 50 times for Hungary.

Altogether there are six Internationals in the team—four of them currently playing for Hungary.

So, all the facts indicate that we have an extremely difficult match ahead. In the past, Fulham have shown they can rise to meet the occasion. We hope this will be true of this evening's match.



FLORIAN ALBERT

Back Again

IT'S good to see Tony Macedo back in action. Not that we are complaining about any butter-fingered displays by Dave Underwood during Tony's absence—far from it.

When Dave stepped into the first team he was an unknown quantity to the vast majority of supporters. But he soon set everyone's mind at rest with a series of outstanding performances.

Dave showed he had courage as well as ability and played a number of matches in agony with a broken toe.

Rodney, All Smiles

RODNEY Marsh has wiped the frown from his face and replaced it with a broad grin. For, after weeks of worrying about his soccer future, our 19-yr-old forward is now feeling on top of the world.

Rodney's troubles started in September when he was injured as he netted the winning goal against Leicester.

The price of victory was high. Rodney suffered concussion, loss of balance, giddy spells, permanent deafness in his left ear and bouts of depression.

Burdened with that list of troubles, Rodney had every right to feel worried. But now the dark clouds have swept away and you won't find a happier player at the Cottage.

Apart from the deafness, Rodney has made a complete recovery and has been certified fit to play.

SPEEDWELL BATTERIES



HEAVY DUTY

Charged ready for use ; guaranteed for two years ; immediate service, no waiting. Batteries hired, tested, properly charged and repaired
Hours 8.30—5.30. Trade enquiries invited.

LONDON

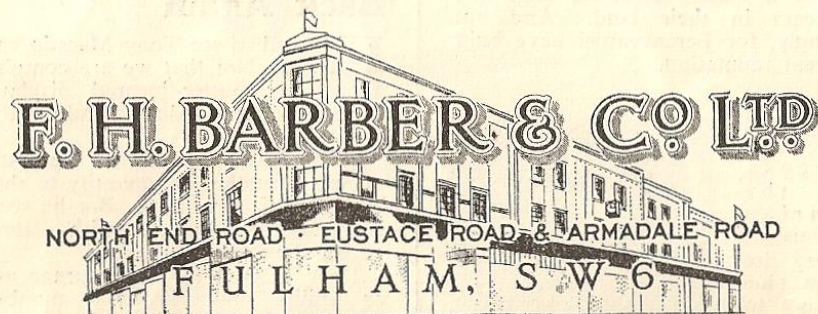
436, UXBRIDGE ROAD, W.12

EARLY CLOSING—THURSDAY

Phone SHE 4224

SERVICE DEPOTS: SURREY, HERTS, BUCKS and KENT

OVER 50 DEPARTMENTS



CHRISTMAS SHOPPING WORRIES?

Leave the worrying to us.

We have many clever ideas for you
to choose from in all price ranges.

YOU'LL FIND A VISIT TO BARBERS THE TONIC YOU NEED?

Appearances & Scorers

FOOTBALL LEAGUE — DIVISION I

Goal—Underwood 15, Macedo 3, Townsend 2.

Right back—Cohen 20.

Left back—Langley 15, Keetch 4, Drake 1.

Right half—Mullery 20.

Centre half—Keetch 13, Dodgin 7.

Left half—Robson 18, Watson 2.

Outside right—Key 18, Leggat 2.

Inside right—S. Brown 11, Cook 4, Marsh 3, Leggat 2.

Centre forward—Cook 15, S. Brown 3, Leggat 2.

Inside left—Haynes 20.

Outside left—Chamberlain 7, Leggat 5,

Howfield 3, Stratton 2, Watson 2.

Metchick 1.

Scorers: Leggat 6, Haynes 3, Chamberlain 2,

Cook 2, Mullery 1, Marsh 1, Langley 1,

Cohen 1, Key 1, Howfield 1.

COMBINATION — DIVISION II

Goal—Macedo 4, Townsend 4, Durdle 3,

Underwood 3.

Right back—Jones 8, Mealand 5, Nicholls 1.

Left back—Drake 14.

Right half—Edwards 8, Watson 5, Good-

game 1.

Centre half—Dodgin 9, Lampe 3, Dempsey

1, Keetch 1.

Left half—Callaghan 12, Edwards 1,

Watson 1.

Outside right—M. Brown 12, Earle 2.

Inside right—Watson 3, Earle 2, S. Brown

2, Marsh 2, Cook 1, Jones 1, Stratton

1, Hayes 1, Metchick 1.

Centre forward—Hayes 7, Stratton 4,

McCloud 1, Dillsworth 1, Key 1.

Inside left—Metchick 6, O'Connell 2,

Stratton 1, Cook 1, O'Rourke 1, Earle

1, Watson 1, Hayes 1.

Outside left—Chamberlain 6, Stratton 6,

O'Connell 2.

Scorers: Stratton 9, Metchick 5, Cook 3,

Watson 2, Chamberlain 2, Earle 1,

Callaghan 1, Edwards 1, Jones 1, McCloud

1, Key 1, M. Brown 1, Hayes 1, S. Brown

1, O'Connell 1.

SOUTH EAST COUNTIES LEAGUE

Goal—Townsend 10, Durdle 2.

Right back—Maynard 7, Adams 3,

Goodgame 2.

Left back—Loveridge 10, Maynard 2.

Right half—Goodgame 7, Dillsworth 3,

Hughes 2.

Centre half—Dempsey 12.

Left half—Hill 7, Hughes 4, Goodgame 1.

Outside right—Dunkley 8, Holmes 4.

Inside right—Dillsworth 7, Adkins 3

Johnson 2.

Centre forward—McCloud 5, Sears 4,

Dillsworth 2, Salmon 1.

Inside left—Earle 11, McCloud 1.

Outside left—Parmenter 5, Symons 4, Ash 3.

Scorers: Earle 14, Dillsworth 11, Sears 5,

McCloud 5, Dunkley 4, Parmenter 2,

Salmon 2, Goodgame 1.

FULHAM FIXTURES 1963/4

Date 1963	Opponents	Ground	Result
			F. A.
Aug. 24	Everton	Away	0-3
.. 28	SHEFF. W.	Home	2-0
.. 31	BIRM'HAM	Home	2-1
Sept. 4	Sheffield Wed.	Away	0-3
.. 7	W. Brom. A.	Away	0-3
.. 10	Burnley	Away	1-4
.. 14	ARSENAL	Home	1-4
.. 18	BURNLEY	Home	2-1
.. 21	Leicester City	Away	1-0
.. 28	BOLTON W.	Home	3-1
.. 30	Blackpool	Away	0-1
Oct. 5	Blackburn R.	Away	0-2
.. 12	NOTTM. F.	Home	0-0
.. 19	Stoke City	Away	1-1
.. 26	CHELSEA	Home	0-1
Nov. 2	Tottenham H.	Away	0-1
.. 9	ASTON V.	Home	2-0
.. 16	(1) Liverpool	Away	0-2
.. 23	SHEFF. U.	Home	3-1
.. 30	West Ham U.	Away	1-1
Dec. 7	(2) WOLVES	Home
.. 9	FERENCVAROSI H
.. 14	EVERTON	Home
.. 21	Birmingham C.	Away
.. 26	IPSWICH T.	Home
.. 28	Ipswich Town	Away
1964			
Jan. 4	(3)		
.. 11	W.B.A.	Home
.. 18	Arsenal	Away
.. 25	(4)		

FOOTBALL LEAGUE—DIVISION I

(Up to and including November 30th, 1963)

	P.	W.	D.	L.	F.	A.	Pts.
Liverpool	19	13	1	5	37	19	27
Blackburn R.	21	11	5	5	48	28	27
Tottenham H.	19	11	4	4	54	36	26
Arsenal	21	11	3	7	56	48	25
Man. Utd.	20	10	4	6	38	25	24
Sheffield U.	20	9	6	5	36	27	24
Everton	19	10	4	5	35	27	24
Sheffield W.	20	9	5	6	40	30	23
Burnley	21	9	5	7	32	29	23
Nottm. F.	20	8	5	7	30	28	21
Chelsea	20	7	7	6	31	29	21
W. Brom. A.	20	8	4	8	32	27	20
West Ham	20	6	8	6	29	32	20
Leicester C.	20	6	7	7	32	30	19
Wolves	20	7	5	8	27	41	19
Stoke City	20	6	6	8	39	41	18
Blackpool	20	6	5	9	25	39	17
FULHAM	20	7	3	10	19	30	17
Aston Villa	20	7	2	11	28	31	16
Birmingham	20	5	3	12	24	46	13
Bolton Wdrs.	20	3	4	13	26	41	10
Ipswich T.	20	1	4	15	19	53	6

NEXT HOME MATCHES:—

League, Div. I

EVERTON

SAT., 14th DECEMBER

Kick off ... 3.0 p.m.

S.E. Counties League

BRENTFORD

SAT., 21st DECEMBER

Kick off ... 2.15 p.m.

Football Combination

BRIGHTON

MON., 23rd DECEMBER

Kick off ... 2.15 p.m.

SOUTHFIELDS

TYRE and BATTERY
SERVICE LTD.

288/290 Merton Road, S.W.18
Phone: Vandyke 5656/7/8
* 406/408 Merton Road, S.W.18
Phone: Vandyke 7904
*110 Burlington Rd., New Malden
Phone: Malden 0463
* OPEN ALL DAY SATURDAY
8 a.m. — 6 p.m.

Wheel balancing



★ FREE TYRE FITTING

English Dishes and all Chinese
Specialities

CHINESE SET LUNCHEON - 4/6
CHINESE SET DINNER - - 6/6

Parties Catered For

**Kai Ling Chinese
Restaurant**

627, Fulham Road

Telephone: RENOWN 1520

Near

Fulham Broadway Station &
Walham Green Post Office

Open 12 noon to Midnight
(including Sunday)

"METTOY WEMBLEY VINYL FOOTBALLS

ARE IDEAL FOR TRAINING AND PRACTICE GAMES"

says *Johnny Haynes*

THEY ARE RE-INFLATABLE, REPAIRABLE, TOUGH AND WILL STAND UP TO ANY
CONDITIONS AND TREATMENT, AND OF COURSE ARE IDEAL FOR YOUNGSTERS



Wembley Official size 7/3 in plastic net bag; in poly bag, 6/9.
Wembley Regulation (Correct Football Weight) 10/6; in tan or white.

SEE THE VAST RANGE OF METTOY PLAYBALLS AT YOUR SPORTS SHOP NOW



FULHAM

White Shirts, Black Shorts.

R		Tony Macedo		L
	2	George Cohen	3	Bobby Drake
	4	Alan Mullery	5	Bobby Keetch
		Maurice Cook	10	Johnny Haynes
	7	Johnny Key	9	Graham Leggat
		Referee— Mr. A. J. STURGEON (London)		Linesmen— Mr. P. H. TAYLOR (Yellow Flag) Mr. S. G. CHRISTIE (Red Flag)
	11		9	7
			10	8
	6		5	4
			3	2
L				R



FERENCVAROSI TORNA CLUB

The team selected from the players numbered in the photograph on
page 8 will be announced over the loudspeaker system.

If it's
WINNERS
you're after!

**SPORTING
EXPRESS**

and GREYHOUND EXPRESS

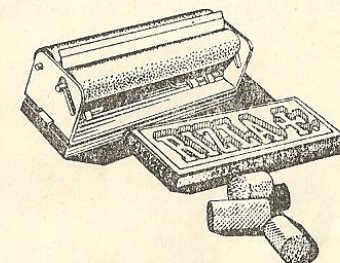
★ BEST DAILY PAPER FOR HORSES, DOGS & FOOTBALL ★

6^{D.}
DAILY
ALL NEWSAGENTS

RIZLA

is for men who like
to suit themselves

- * PLAIN OR FILTERED
- * FINGER ROLLER OR
MACHINE ROLLER
- * OWN CHOICE OF TOBACCO



Complete Outfit only 9½d.
Roll Your Own with RIZLA it's so EASY

The Nearest Houses
for

**YOUNG & CO'S
SPECIAL PRIZE BEER**

THE CASTLE

(with First Class Restaurant)

PUTNEY BRIDGE ROAD

THE DUKES HEAD

PARSONS GREEN



Back Row : Novák (1), Acél (2), Géczi (3), Száger (4), Dalnoki (5), Mátrai (6).
 Middle Row : Vilezsál (7), Hägelmann (8), Orosz (9), Mészáros (10), Németh (11), Kocsis (12), Varga (13).
 Front Row : Kókény (14), Albert (15), Friedmanszky (16), Fenuvesi II (17), Rákosi (18), dr. Fenuvesi I (19).

DO YOU KNOW

THE following nine questions are designed to test your knowledge of Fulham F.C. Grade yourselves accordingly: — Full marks (you are a genius): 5—8 (very good): 3 or four (good): 2 (fair): 1 or 0 (are you a Chelsea fan?).

One: Name one Fulham player who appeared in every League match last season.

Two: How many full Internationals are at present on Fulham's books as players or officials?

Three: What was the original name of the club when it was formed?

Four: How many appearances have Fulham made in the F.A. Cup Final and Semi-Final?

Five: When did Fulham become a professional club?

Six: Who was Fulham's top League scorer last season?

Seven: Which ex-Fulham players manage the following clubs: West Ham, Coventry, Notts County, Reading?

Eight: Record attendance at the Cottage was 49,335 on October 8th, 1938. Who were Fulham's opponents?

Nine: Which present Fulham player or official has the longest service with the club?

Answers
 (1) Tony Macedo
 (2) There both had 100 percent records.
 (3) There are seven Internationals; Johnny Haynes, Graham Leggat, Jackie Henderson, Jim Langley, Bobby Robson, Frank Osborne, Bedford Jeppard. (4) Four appearances in the 1879, 1879, 1879, 1879.
 (5) Fulham Semi-Final none in the Final.
 (6) (7) Top League scorer last season was Cook.
 (8) (9) Ron Greenwood manages West Ham; Jimmy Hill, Coventry; Eddie Lowe, Notts County, Roy Bentley, Reading. (10) Fulham's opponents were Millwall. (11) Frank Penn, first-team trainer, has the longest service. He joined Fulham in 1916.

ALL THE MUSIC YOU HEAR
 is from "PYE",

including the fabulous
 "GOLDEN GUINEAS"

12in. L.P.'s for 19/11 each
 Also "REPRISE" Records from Hollywood



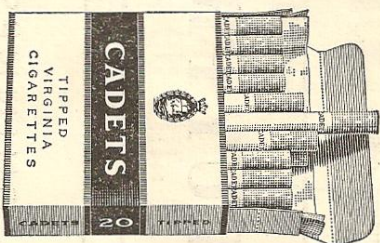
From the makers of Senior Service

CADETS

a smaller cigarette in the same great tradition

Cadets bring you real satisfaction: fine Virginia, firm packing, complete smoking enjoyment.

CADETS BRING QUALITY TO SMALLER CIGARETTES



TIPPED 2/10
 PLAIN 3/5

ALSO IN TENS.



Back Row : Novák (1), Acél (2), Géczi (3), Száger (4), Dalnoki (5), Mátrai (6).
Middle Row : Vilezsál (7), Hägelmann (8), Orosz (9), Mészáros (10), Németh (11), Kocsis (12), Varga (13).
Front Row : Kókény (14), Albert (15), Friedmanszky (16), Fenuvesi II (17), Rákosi (18), dr. Fenuvesi I (19).

SUPPORTERS' CLUB CORNER

WE are looking forward to an important date next Spring—the day when we make the last payment on Fulham's floodlights.

The Supporters' Club Committee took a big decision when it committed itself to foot the bill for the lights.

Now we should like to say "thank you" to the thousands of spectators who support the Jackpot Competition, which is our main money-raiser.

Because the Supporters' Club paid for the lights, Fulham F.C. was able to use the cash it had in hand to bring Bobby Robson back to the Cottage.

What better example could there be of the first-class spirit of co-operation which exists between the Supporters' Club and Fulham F.C.?

In a month's time a panel of judges will be selecting the lucky girl who will be crowned "Fulham Football Queen".

The judging takes place at our Carnival Dance in Fulham Town Hall on Saturday, January 11th.

Fulham's Queen will compete in the Southern Area Finals at Brighton in May and then, perhaps, she will win a place in the All-England Finals.

Buying the right kind of Christmas present can be a headache. This is where our Sales Section may be able to help. They have a wide range of articles, including men's ties with an exclusive "Cottage" design.

Another good buy is the solid chrome

and enamel car badge. Other useful items include striped woollen scarves and attractive ski hats in Fulham colours—just the job for youngster.

SALES SECTION

Ball Point Pens (Automatic)	1/-
Photographs (Postcard size)	1/-
Cycle Pennants, with masts	3/6
" " without masts	2/6
Lapel Badges (Cottage Design)	1/6
" " (Juniors)	6d.
Programme Cases (dated 1963/64; past years by special order)	3/-
Car Badges (Plastic)	4/-
" " (Good Quality Metal)	16/6
Blazer Badges (Printed cloth)	3/6
" " (Silver Wire)	29/6
Ski Hats, Wool, Black and White	6/6
Scarves, Black and White Stripes	7/6
" Diagonal	12/6
Ties—Cottage Design	14/6
Rosettes, Black and White Ribbon	1/6
(A limited number of Pure Silk are available, then supplies will be of Silk/Terylene Mixture.)	

The above items are on sale at kiosks at the ground and at H.Q., "The Golden Lion", Fulham High Street. When ordering by post remember to include postage.

RAILWAY SERVICES

BIRMINGHAM v. FULHAM — 21.12.63

Forward			
Paddington dep.	9.10 a.m.	11.10 a.m.	
Birmingham arr.	11.10 a.m.	1.11 p.m.	
Return			
B'ham (Snow Hill) dep.	6.00 p.m.	8.00 p.m.	
Paddington arr.	8.17 p.m.	10.08 p.m.	
Reservations on 11.10 a.m. For. and 6 p.m. Ret.			
Fare: 24/- Adult, and 12/- Juvenile.			

BUY PREMIUM BONDS

GUINNESS
IS GOOD
FOR YOU

ALL ENQUIRIES FOR ADVERTISING

IN THIS PROGRAMME TO
**STILWELL DARBY
& CO. LTD.**

24, OLD BURLINGTON STREET,
LONDON, W.1.

Phone: REgent 8671 (5 lines)

WHEN IN FULHAM VISIT

Mr. and Mrs. JOHN H. BARRON

THE GOLDEN LION

HIGH STREET, FULHAM

Headquarters Fulham F.C. Supporters' Club

Large Beer Garden at Rear

(Children admitted)

Charrington's Toby Beers

SNACKS ALWAYS AVAILABLE

FULLY LICENSED

F. AMBRIDGE

Linoleum, Floorcloth and

:: Carpet Warehouse ::

351, NORTH END ROAD,

FULHAM, S.W.6.

Telephone: FULham 3078

FAMILY PLANNING

FREE BOOK Confidential Postal Service

Write for our free booklet explaining all modern methods of Family Planning. Sent post free and under plain cover with details of our Confidential Postal Service.

PREMIER LABORATORIES

(Dept. 303) 11 Black Lion Street, Brighton.

Please send your free book under plain sealed cover



NAME

ADDRESS

PERSONAL LOANS

£25 TO £500'

without security

BENEFICIAL

FINANCE CO.

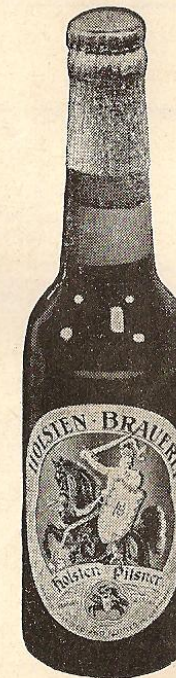
of England*

71 PICCADILLY, W.1. HYD 2861

86 HIGH ROAD, ILFORD. ILF 3871

279-287 HIGH ST., HOUNSLOW 3415

(*Inc. in U.S.A. with limited liability)



HOLSTEN

holsten pilsner—
the true lager
brewed, bottled and
matured in Hamburg

For the discriminating person who prefers to drink a top quality, high gravity and full flavoured German lager.
also DIAT PILS a lager specially brewed for diabetics—non-fattening.

HOLSTEN DISTRIBUTORS LIMITED

55 Farringdon St., London, E.C.4. Tel CITY 1731

SMITH BROS.

DEPARTMENTAL
STORE

OVER 40 DEPARTMENTS

103-133, MITCHAM ROAD, TOOTING, S.W.17

BUS 220 PASSES DOOR

BAL 8252 (12 Lines)

COMBINATION — DIVISION II

(Up to and including December 2nd, 1963)

	P.	W.	D.	L.	F.	A.	Pts.
Birmingham	14	9	3	2	38	15	21
Swindon T.	12	10	0	2	42	20	20
Chelsea	13	8	3	2	33	10	19
Leyton O.	15	8	3	4	36	34	19
Charlton A.	13	7	4	2	23	18	18
Southampton	13	7	1	5	33	23	15
FULHAM	14	6	3	5	31	29	15
Millwall	15	6	3	6	22	21	15
Coventry C.	14	5	4	5	24	21	14
Portsmouth	12	5	3	4	30	21	13
Watford	13	5	3	5	26	25	13
Bournemouth	14	5	3	6	22	23	13
Brighton	14	5	2	7	25	43	12
Reading	14	3	5	6	37	44	11
Q.P.R.	14	4	1	9	17	30	9
Brentford	14	2	5	7	16	34	9
Aldershot	13	1	4	8	15	33	6
Southend U.	13	0	2	11	21	47	2

SOUTH EAST COUNTIES LEAGUE

(Up to and including November 30th, 1963)

	P.	W.	D.	L.	F.	A.	Pts.
Chelsea	14	11	1	2	64	14	23
Q.P.R.	11	9	0	2	39	8	20
FULHAM	13	9	2	2	46	25	20
Leyton O.	14	8	2	4	37	22	18
Arsenal	12	6	3	3	25	12	15
Tottenham H.	12	7	1	4	34	20	15
Crystal P.	13	6	2	5	30	28	14
West Ham	12	5	3	4	27	19	13
Charlton A.	11	5	2	4	23	21	12
Brentford	14	6	0	8	25	55	12
Watford	12	4	1	7	21	31	9
Luton T.	12	3	2	7	32	41	8
Portsmouth	13	3	1	9	22	41	7
Millwall	12	3	1	8	23	60	7
Bexleyheath	12	2	1	9	18	40	5
Brighton	13	1	0	12	15	47	2

FROM THE
GODFREY DAVIS
MEN

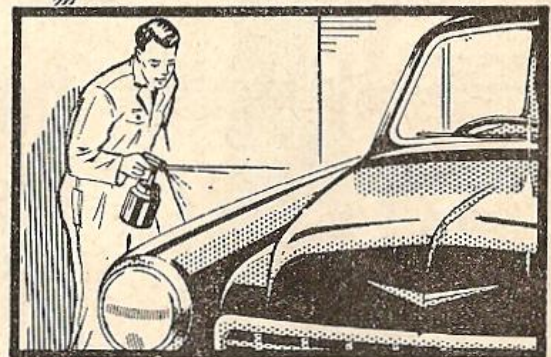
you get better,
quicker service

GODFREY
DAVIS

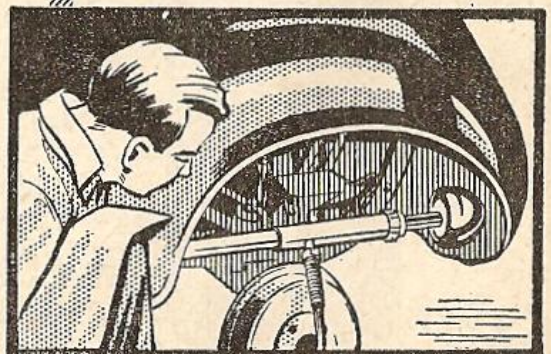
NORTH END ROAD · WEST KENSINGTON W14

Tel: FULham 8831

FORD DEALERS · WE USE EXCLUSIVELY BP ENERGOL



CELLULOSE SPRAYING



PANEL BEATING

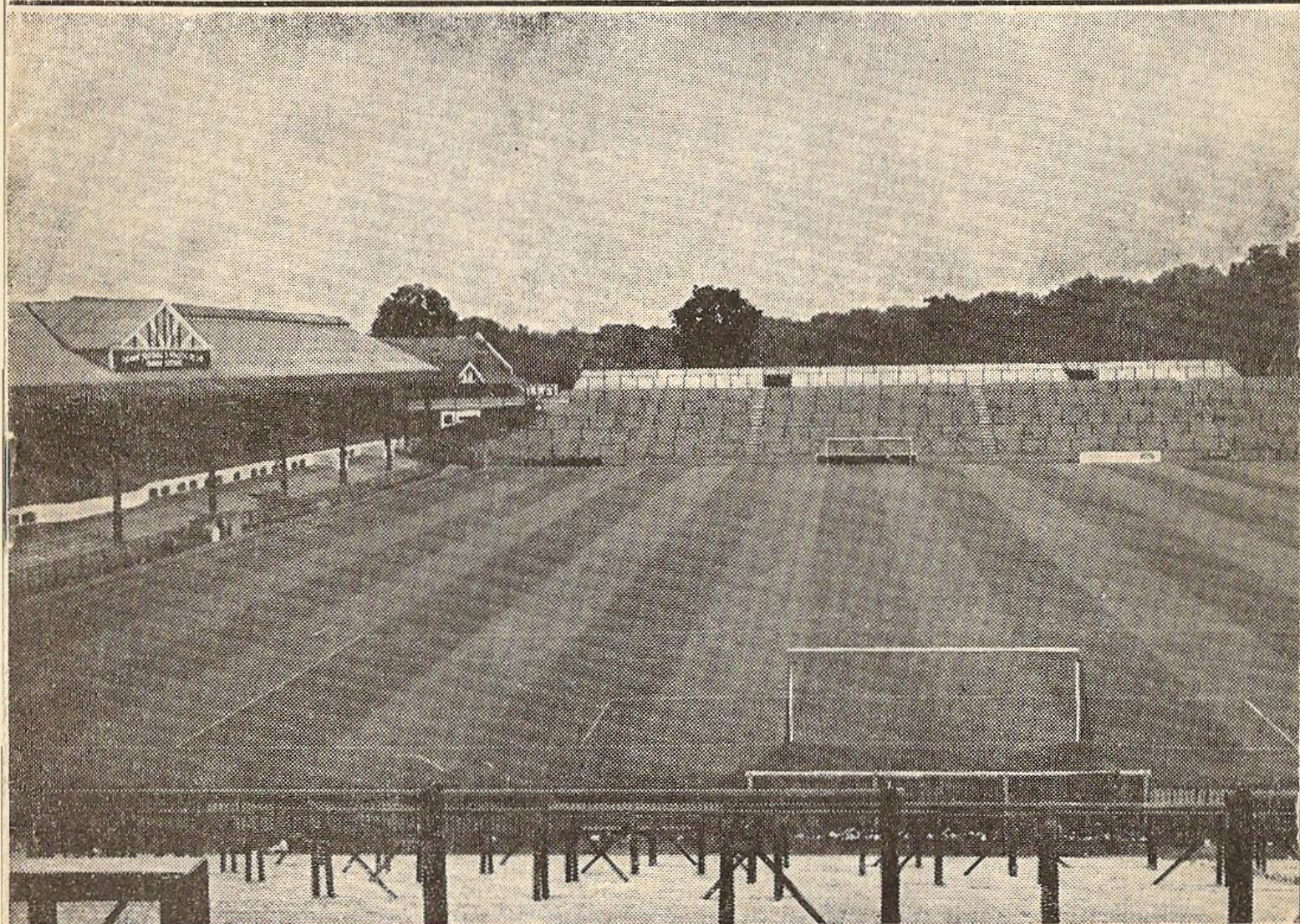


FULHAM

Football Club

LEAGUE DIVISION I
SEASON 1963-1964

OFFICIAL PROGRAMME



PRICE

6^d

FERENCVAROSI TORNA CLUB

(HUNGARY)

MONDAY, DECEMBER 9, 1963

FRIENDLY MATCH

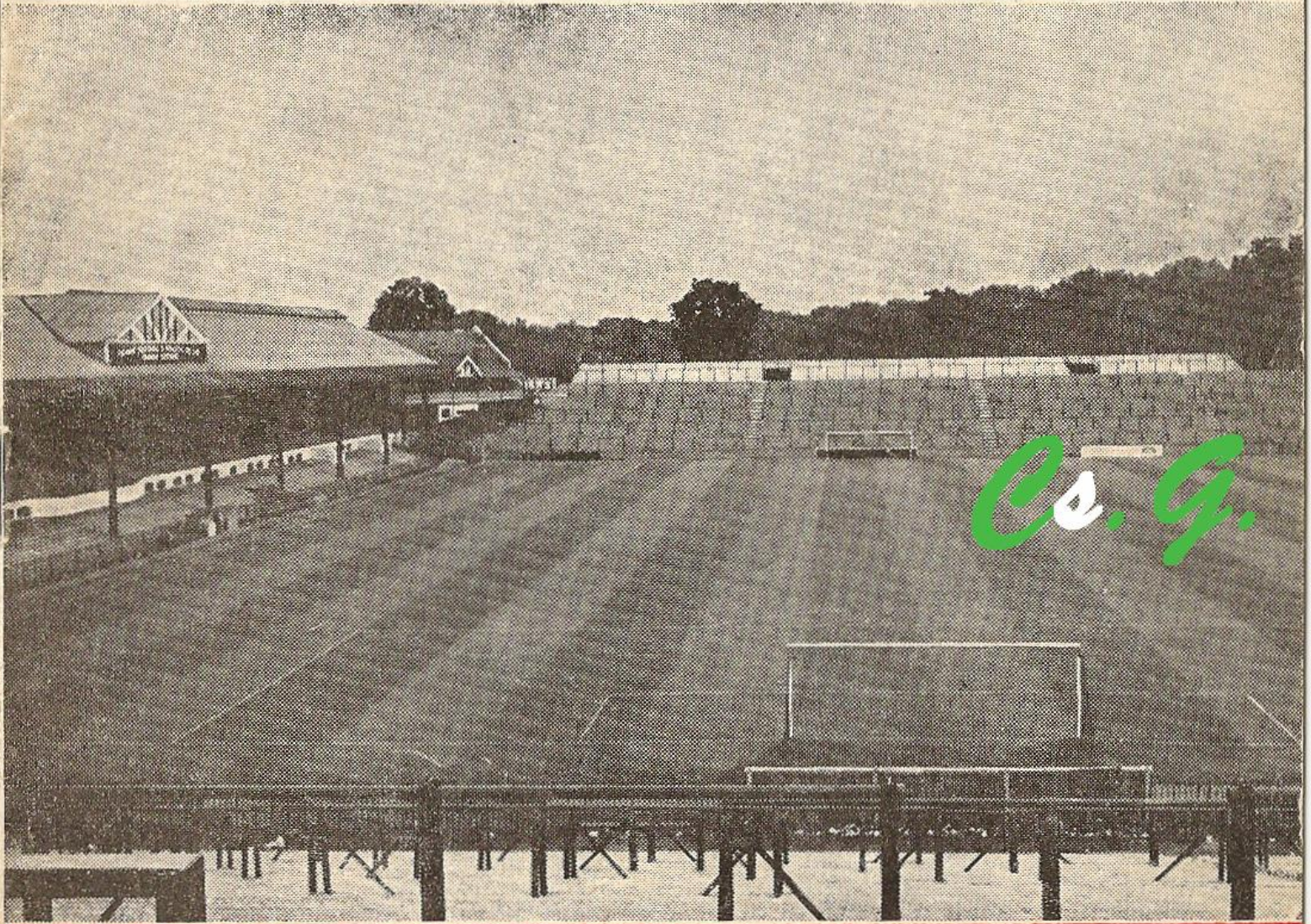
KICK OFF 7.15 P.M.



FULHAM Football Club

LEAGUE DIVISION I
SEASON 1963-1964

OFFICIAL PROGRAMME



PRICE
6^d

FERENCVAROSI TORNA CLUB

(HUNGARY)

MONDAY, DECEMBER 9, 1963
FRIENDLY MATCH KICK OFF 7.15 P.M.